

DESIGNED TO FIT



Introducing the PURELL ES™
Everywhere System



PURELL ES™ EVERYWHERE SYSTEM IS DESIGNED TO FIT

...Your World

PUT IT WHERE YOU NEED IT.

- Small, stylish and versatile for every need
- Compact size and multiple mounting options for ultimate adaptability
- Smaller than a dispenser and holds more product than a standard 8 oz bottle



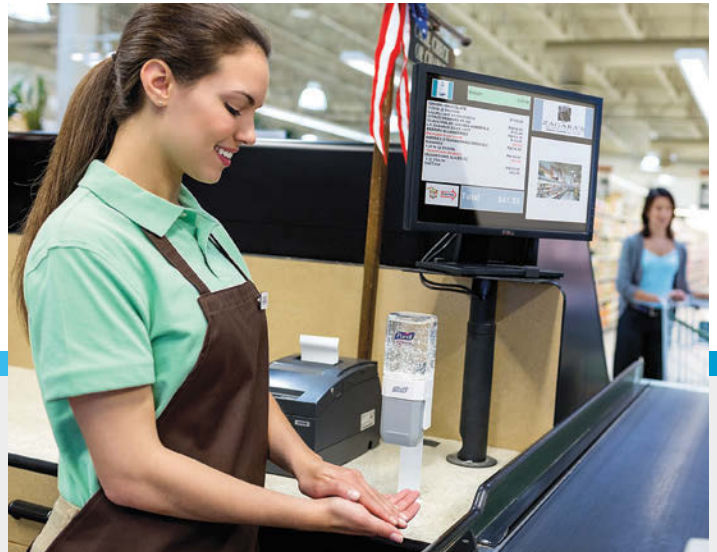
PURELL® ADX-12™
Dispenser



PURELL ES
Everywhere System



PURELL 8 oz
Bottle



...Your Health & Well-Being Needs

TRUSTED & USED IN HOSPITALS

- the ultimate in germ-killing effectiveness

- PURELL Advanced Instant Hand Sanitizer uses next-generation science to provide unprecedented germ kill while helping maintain skin health
- Nothing is as hard on germs or as easy on hands
- Kills more than 99.99% of most common germs that make you sick



...Your Way of Life



DEPENDABLE PERFORMANCE. SIMPLE TO USE.

- Unlike a bottle, the PURELL ES™ System will never get lost or knocked over
- Sturdy, one-hand dispensing makes hand sanitizing easy
- The PURELL® refill cartridges snap quickly in place
- Use the included Command® Strips from 3M for secure and reliable wall, rail or surface mounting
- Trouble-free performance, backed by the GOJO Lifetime Guarantee



THE RIGHT SOLUTION EVERYWHERE YOU NEED IT

Our goal has always been to make staying well easier. You trust PURELL® Advanced Hand Sanitizer skin care specialists to apply the best science and innovations to help keep you and your skin healthy. The PURELL ES™ Everywhere System is the latest advancement in design. It fits everywhere to better fit your life.



Refill cartridge **reliably mounts** to the base, which securely mounts to surfaces to resist theft

Ready-to-install with **preassembled** base and refill cartridge with Command® strips from 3M for **trouble-free placement**

Base constructed of robust materials for **long-term reliability**

Entire refill exposed for **AT-A-GLANCE™ monitoring** of product level and **easy servicing**

450 mL refill contains almost **twice as much product** as standard 8 fl oz PURELL pump bottle for **improved maintenance**

Clear, gem-shaped refill cartridge has the **familiar look of the PURELL brand everyone knows and trusts**



The **GOJO Social Sustainability** goal is to bring well-being to 1 billion people every day. The new PURELL ES™ Everywhere System is advancing this goal by increasing access to hand hygiene everywhere it is needed, creating more opportunities to improve well-being every day.

Formulation Matters

PURELL® Advanced Instant Hand Sanitizer provides unprecedented germ kill while soothing hands and maintaining skin health.

Unmatched Effectiveness — Provides potent, broad-spectrum antimicrobial activity.

- Kills 99.99% of germs on hands, not just in the lab¹
- Exceeds FDA Healthcare Personnel Handwash requirements with just 1.1 mL of product, or a single pump²

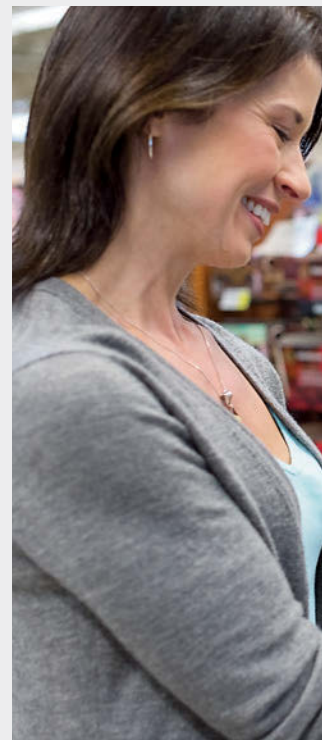
Skin-Friendly Formulas — Enhanced with four skin-conditioning agents that help maintain skin health — skin moisture and skin feel.

Using PURELL Advanced Hand Sanitizer has been clinically proven to virtually stop the spread of illness-causing germs.³

- Health Experts know that **80% of illnesses** are transmitted by hands, and agree that hand sanitizer is one of the easiest ways to stop the spread of germs.
- The **PURELL ES Everywhere System** is designed to be placed in small, high-traffic spaces where other solutions can't fit to increase the use of sanitizer.

THE PURELL ES™ EVERYWHERE SYSTEM

Proven Hand Hygiene Where You Need It.



OFFICE

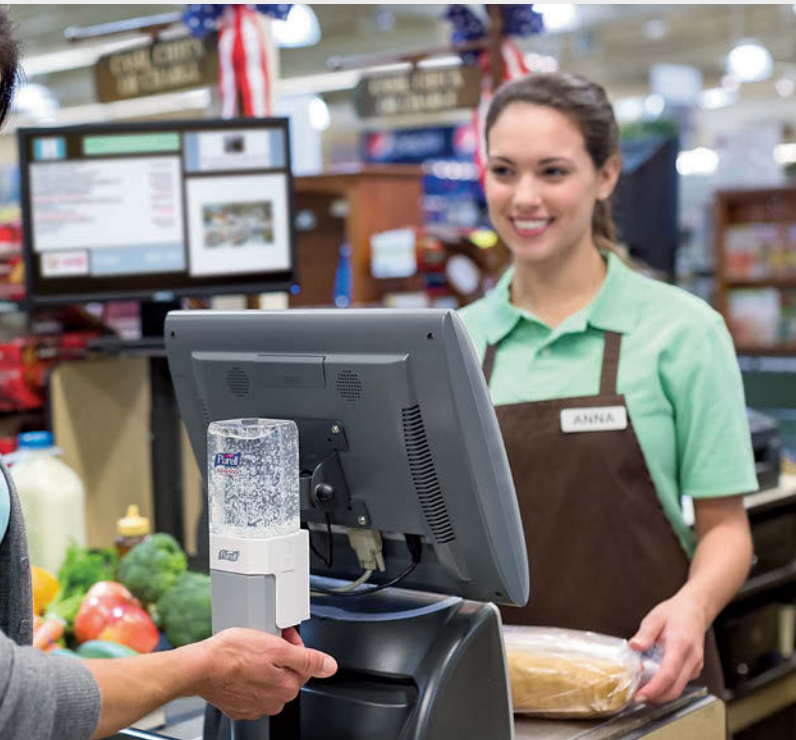
Create a healthier office community and enhance tenant/employee satisfaction by taking the extra step to show you care.

- Common areas and lobbies
- Break rooms and cafeterias
- Conference rooms
- Time clock

HEALTHCARE SETTINGS

Maintain hand hygiene compliance by providing staff convenient access to hand sanitizer when it's needed most.

- Patient rooms
- Nurses' station
- Registration desk



GROCERY STORES

Encourage employees and shoppers to avoid germs when handling food, money and credit cards at checkout lanes and in areas where cleanliness matters most.

- Checkout lanes
- Food prep areas
- Drink stations
- Pharmacy waiting areas



DENTAL & MEDICAL OFFICES

Place the PURELL ES™ Everywhere System in office and exam areas to keep your staff healthy and signal your high hygiene standards to patients.

- Check-in area
- Patient rooms



CONVENIENCE STORES

Inspire the confidence of customers with your attention to cleanliness, especially in food prep areas. Keep hands clean without restroom visits.

- Cashier's counter
- Roller grill and other food stations
- Drink stations



DESIGNED TO FIT

The PURELL ES™ Everywhere System offers four mounting options to provide the utmost versatility for every placement need.



Adhesive wall mount



Screw wall mount



Surface-mount bracket



Rail-mount bracket

PRODUCT ORDER INFORMATION

Description	Case Pack	Order No.
STARTER KIT		
PURELL ES Everywhere System Starter Kit - Includes 1 White Base and 1 450mL Refill	8 Starter Kits/Case	1450-D8
REFILLS		
PURELL ES Everywhere System 450mL Refill - PURELL Advanced Instant Hand Sanitizer Gel	6 Refills/Case	1450-06
PURELL ES Everywhere System 450mL Refill - PURELL Advanced Instant Hand Sanitizer Gel	8 - 2pk Refills/Case	1450-08-2PK
ACCESSORIES		
PURELL ES Everywhere System Accessories - White Surface Mount	8 Surface Mounts/Case	5840-08-WHT
PURELL ES Everywhere System Accessories - Black Rail Mount	8 Rail Mounts/Case	5830-08-BLK

- 1 Healthcare Personnel Handwash Study #100635-101 at 3.0 mL, September 24, 2010, BioScience Laboratories, Bozeman, MT.
- 2 PURELL® Advanced Instant Hand Sanitizer exceeds HCPHW at 1.1 mL of product. ADX™ and LTX™ dispensers only. Fully primed pump through 95% of refill.
- 3 Based on 2013 University of Arizona Study showing a reduction in transfer of germs to household surfaces and hands. Visit PURELL.com for a summary of the study



GOJO Industries, Inc.
One GOJO Plaza, Suite 500
P.O. Box 991 • Akron, OH 44309-0991
Tel: 1-330-255-6000 • Toll-free: 1-800-321-9647
Fax: 1-800-FAX-GOJO

The Global Leader in Hand Hygiene & Healthy Skin
www.GOJO.com